

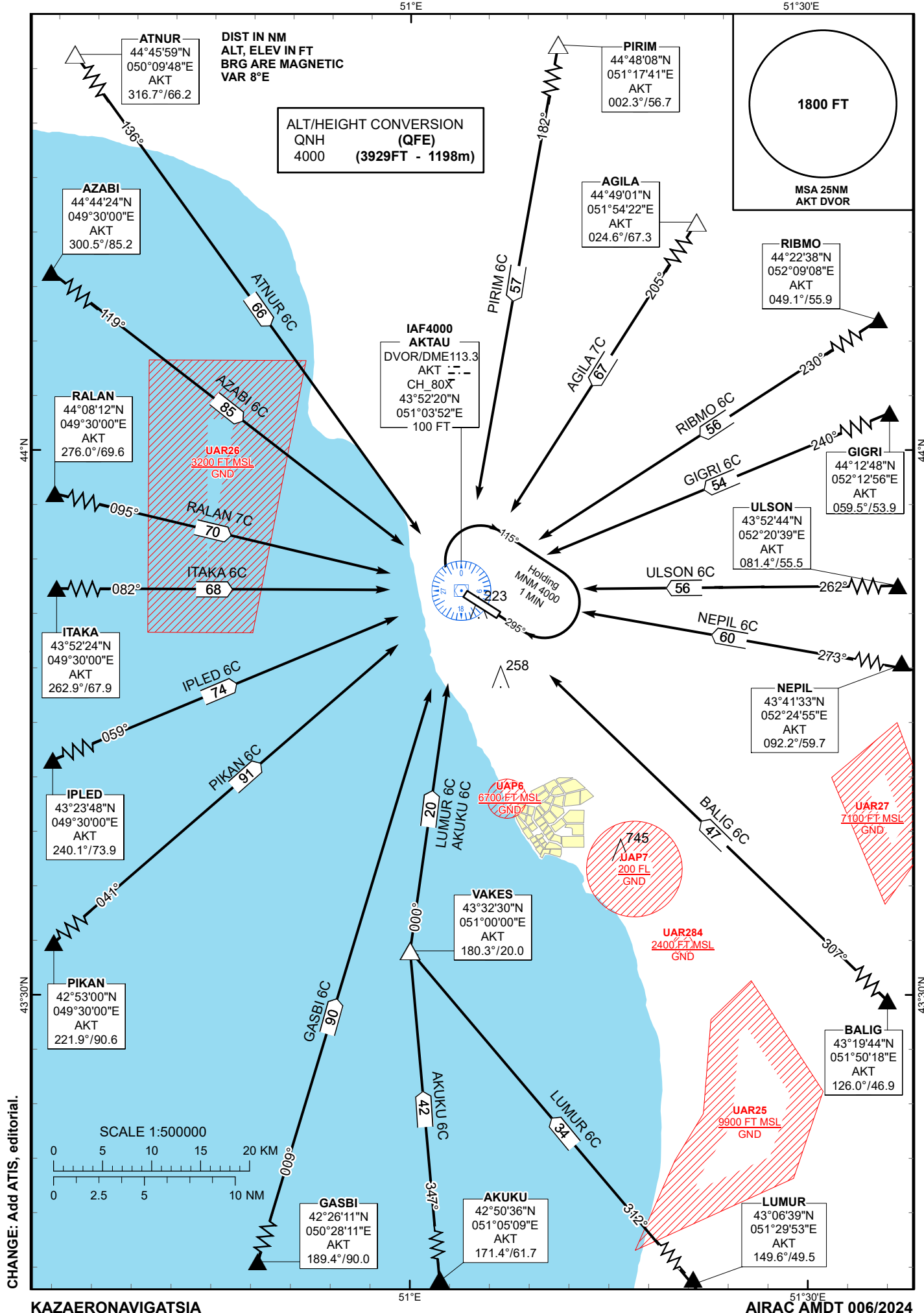
STANDARD ARRIVAL
CHART - INSTRUMENT
(STAR) - ICAO

TRANSITION ALTITUDE
10000 FT

AKTAU TOWER 120.7
AKTAU ATIS (EN) 130.1
AKTAU ATIS (RU) 126.2

AGILA 7C, AKUKU 6C, ATNUR 6C, AZABI 6C,
BALIG 6C, GASBI 6C, GIGRI 6C, IPLED 6C,
ITAKA 6C, LUMUR 6C, NEPIL 6C, PIKAN 6C,
PIRIM 6C, RALAN 7C, RIBMO 6C, ULSON 6C

AKTAU
RWY 11



STANDARD ARRIVAL ROUTES – INSTRUMENT (STAR) AKTAU RWY 11	
PIRIM 6C After crossing PIRIM (R002.3° D56.7 AKT) proceed on track 182° to AKT. Crossing FL at PIRIM are by ATC. Cross AKT at 4000.	AKUKU 6C After crossing AKUKU (R171.4° D61.7 AKT) proceed on track 347° to VAKES (R180.3° D20.0 AKT). After crossing VAKES, proceed on track 000° to AKT. Crossing FL at AKUKU are by ATC. Cross AKT at 4000.
AGILA 7C After crossing AGILA (R024.6° D67.3 AKT) proceed on track 205° to AKT. Crossing FL at AGILA are by ATC. Cross AKT at 4000.	GASBI 6C After crossing GASBI (R189.4° D90.0 AKT) proceed on track 009° to AKT. Crossing FL at GASBI are by ATC. Cross AKT at 4000.
RIBMO 6C After crossing RIBMO (R049.1° D55.9 AKT) proceed on track 230° to AKT. Crossing FL at RIBMO are by ATC. Cross AKT at 4000.	PIKAN 6C After crossing PIKAN (R221.9° D90.6 AKT) proceed on track 041° to AKT. Crossing FL at PIKAN are by ATC. Cross AKT at 4000.
GIGRI 6C After crossing GIGRI (R059.5° D53.9 AKT) proceed on track 240° to AKT. Crossing FL at GIGRI are by ATC. Cross AKT at 4000.	IPLIED 6C After crossing IPLIED (R240.1° D73.9 AKT) proceed on track 059° to AKT. Crossing FL at IPLIED are by ATC. Cross AKT at 4000.
ULSON 6C After crossing ULSON (R081.4° D55.5 AKT) proceed on track 262° to AKT. Crossing FL at ULSON are by ATC. Cross AKT at 4000.	ITAKA 6C After crossing ITAKA (R262.9° D67.9 AKT) proceed on track 082° to AKT. Crossing FL at ITAKA are by ATC. Cross AKT at 4000.
NEPIL 6C After crossing NEPIL (R092.2° D59.7 AKT) proceed on track 273° to AKT. Crossing FL at NEPIL are by ATC. Cross AKT at 4000.	RALAN 7C After crossing RALAN (R276.0° D69.6 AKT) proceed on track 095° to AKT. Crossing FL at RALAN are by ATC. Cross AKT at 4000.
BALIG 6C After crossing BALIG (R126.0° D46.9 AKT) proceed on track 307° to AKT. Crossing FL at BALIG are by ATC. Cross AKT at 4000.	AZABI 6C After crossing AZABI (R300.5° D85.2 AKT) proceed on track 119° to AKT. Crossing FL at AZABI are by ATC. Cross AKT at 4000.
LUMUR 6C After crossing LUMUR (R149.6° D49.5 AKT) proceed on track 312° to VAKES (R180.3° D20.0 AKT). After crossing VAKES, proceed on track 000° to AKT. Crossing FL at LUMUR are by ATC. Cross AKT at 4000.	ATNUR 6C After crossing ATNUR (R316.7° D66.2 AKT) proceed on track 136° to AKT. Crossing FL at ATNUR are by ATC. Cross AKT at 4000.